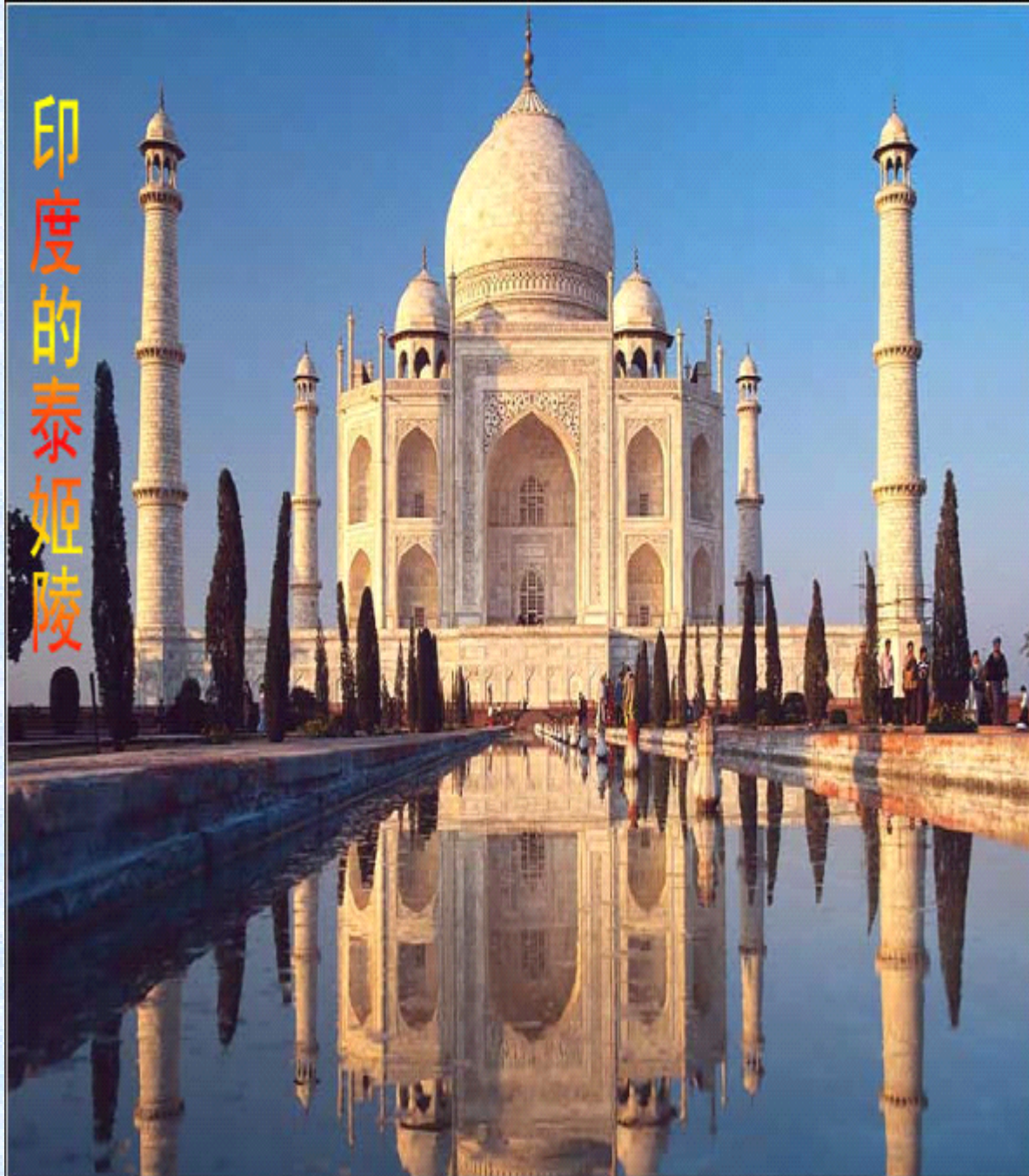


# The Taj Mahal Epitaph of Love

爱的铭记——泰姬陵

印度的泰姬陵



2010-12-5

A: Thank you  
so much .Nice to  
see you .I am  
Kelsey.

B:Nice to have  
you with us in  
our program  
Global  
Travelling .I am  
Janet.

A: Today we  
will take you to  
a mysterious and  
magic country --  
----India.

B:Ok, Do you  
know what is the  
most beautiful  
and famous  
architecture in  
India?

.....





- A;Yes, you are right.It is the Taj Maha I .Yes you know ,the Taj mahal is synonymo us with



清清仙子





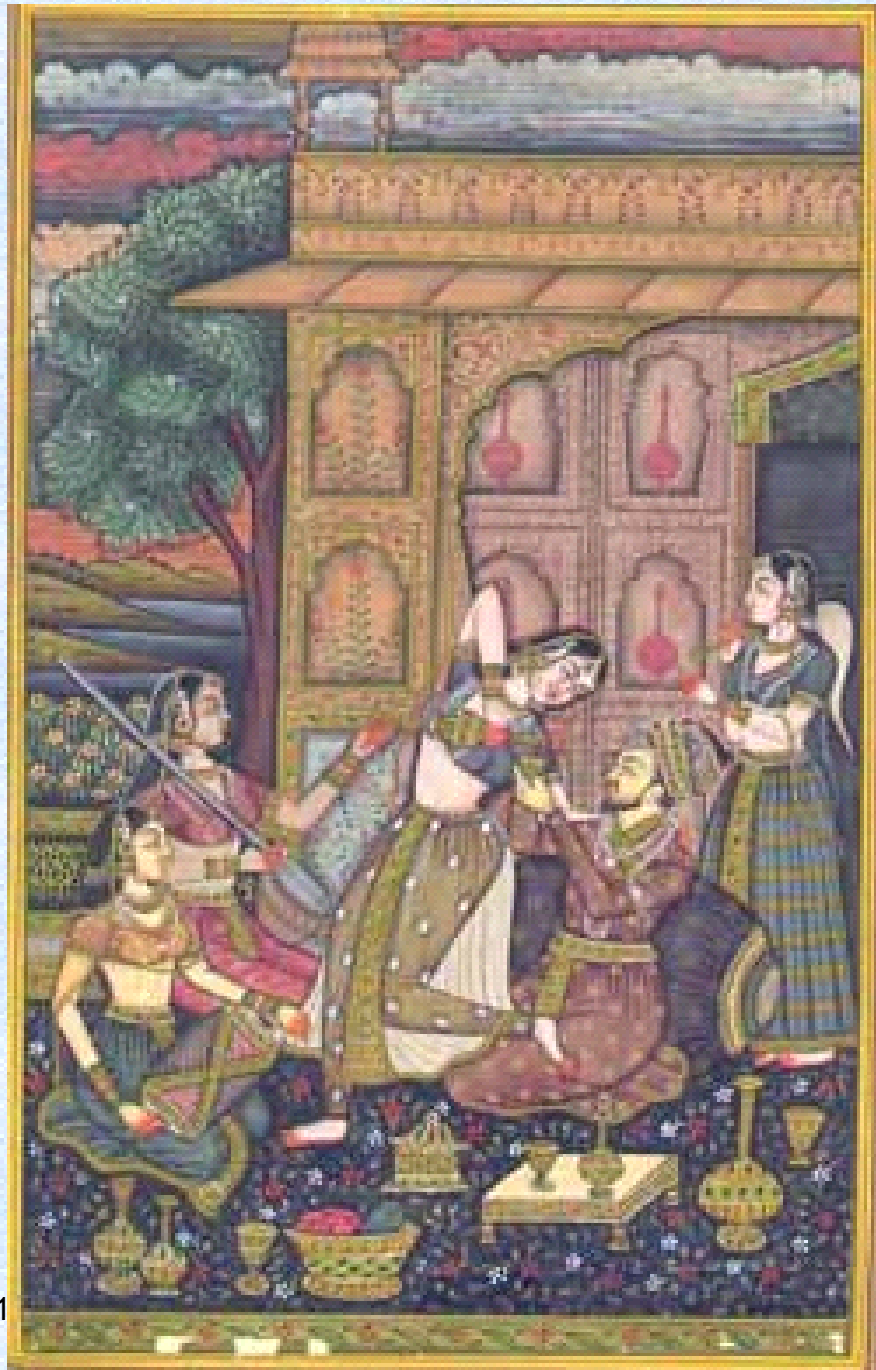
.Renowned for its architectural magnificence and aesthetic beauty ,it counts among man's proudest creations and is invariably included in the list of the world's foremost wonders

.Meanwhile ,there is a moving love story behind it.



2010-12-5



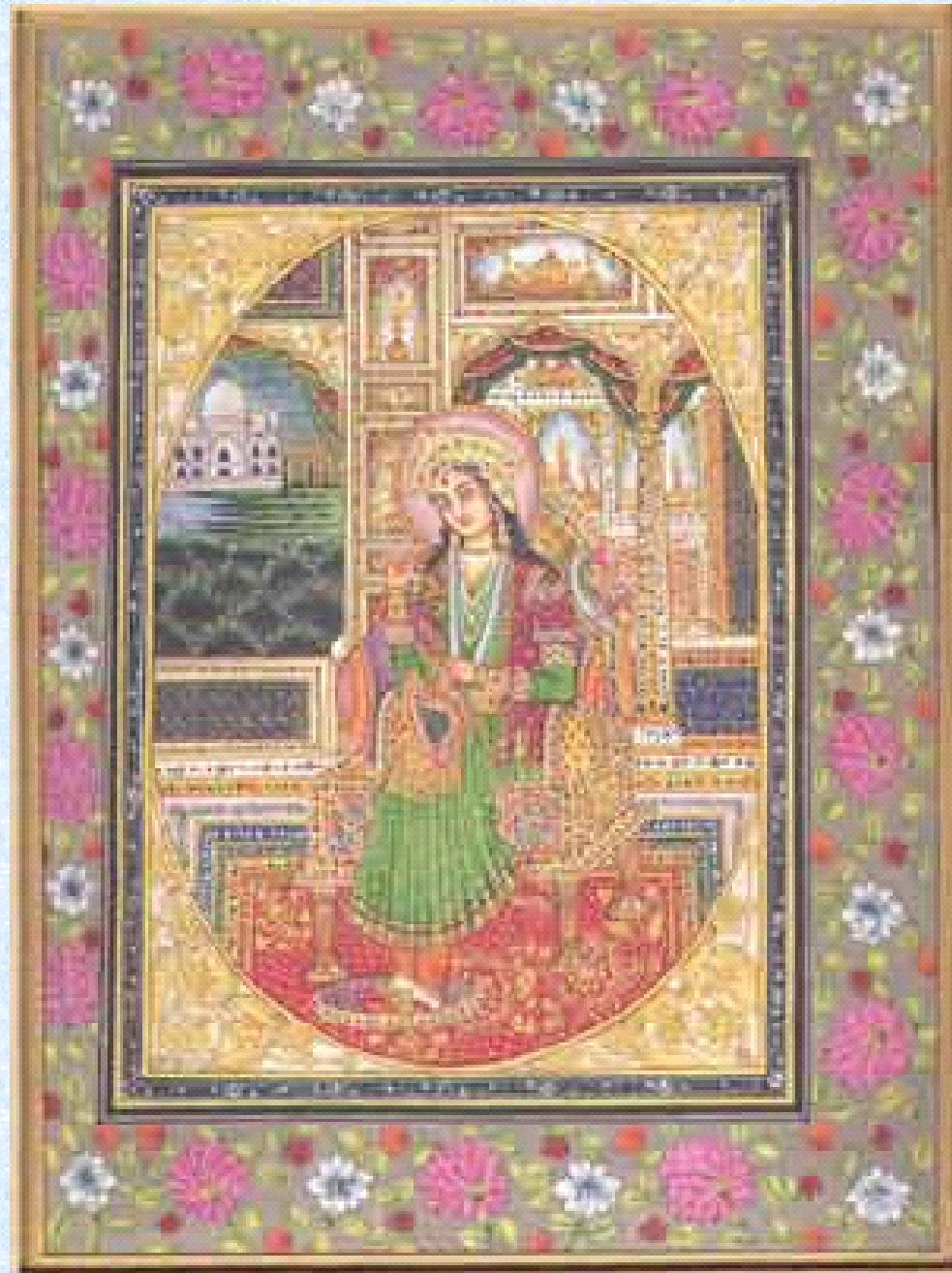


B:The love story behind the Taj Mahal is a tragic one .What you actually see here is an extravagant tomb built in the seventeenth century by emperor Shah Jahan in memory of his beloved wife Mumtaz .



A;The story goes back in 1607.When a prince of a royal Mughal household walked on the street ,accompanied by his courtiers .He caught a glimpse of a beautiful girl.Five years and a wife later ,The regal (帝王的)20-year-old went to wed his 19-year-old bride.But 19 years later ,Mumtaz died in childbirth .



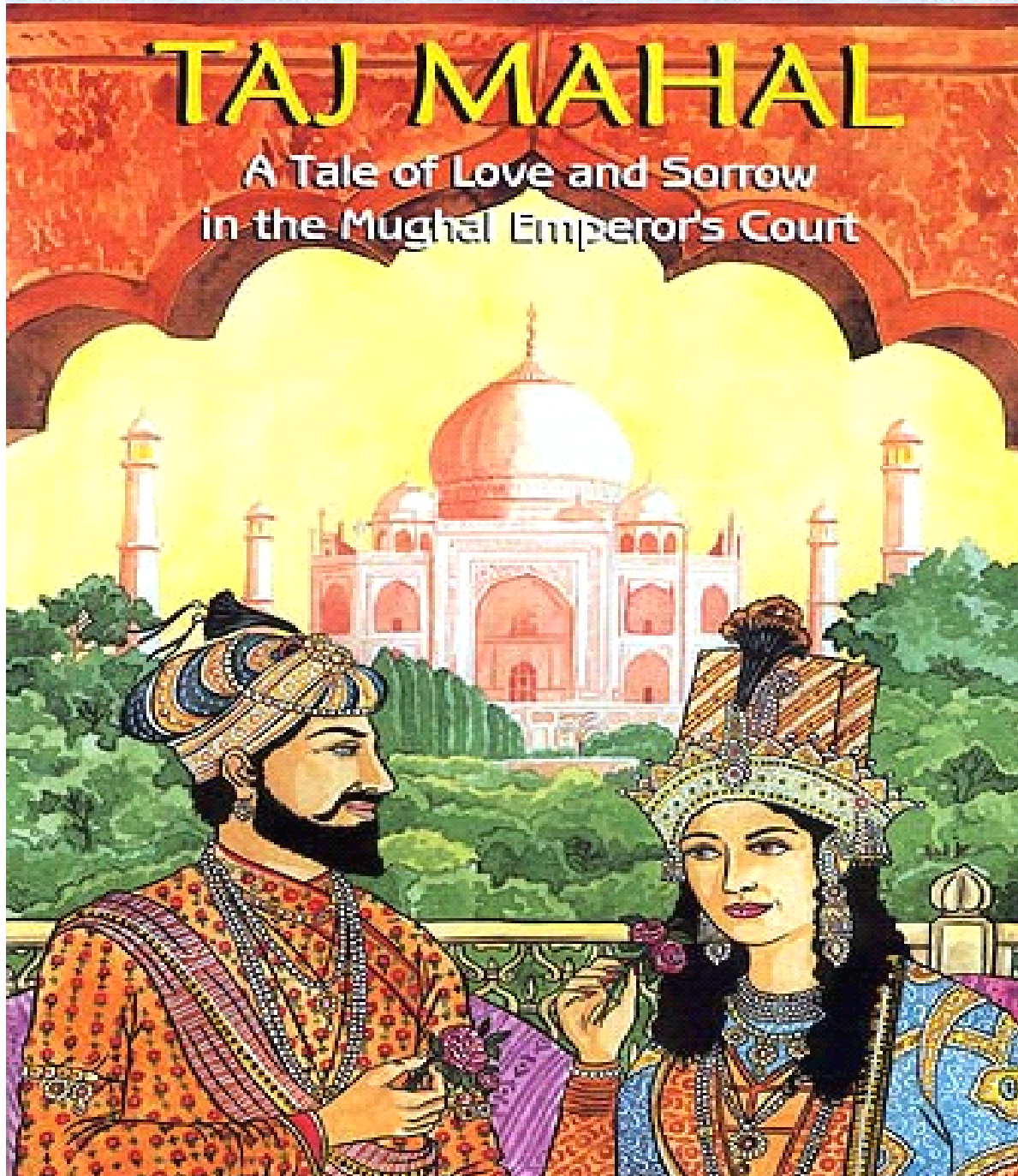


B;The heartbroken emperor resolved to immortalize his memory by creating the finest monument ever seen ----The Taj Mahal.

A;How deep was Shah Jahan 's love for Mumtaz can be seen from the reaction the tragedy provoked .His beard began to turn white and he never quite appeared the same thereafter.

# TAJ MAHAL

A Tale of Love and Sorrow  
in the Mughal Emperor's Court



B: It was custom for the emperor to build a Mausoleum to ensure his own body's journey to heaven .But Shah's love for his wife was such that instead he built it for her .Construction of the Taj Mahal began in the same year as Mumtaz's death .It took a fleet on 100 elephants and a work force of over 20000 to complete this majestic structure .

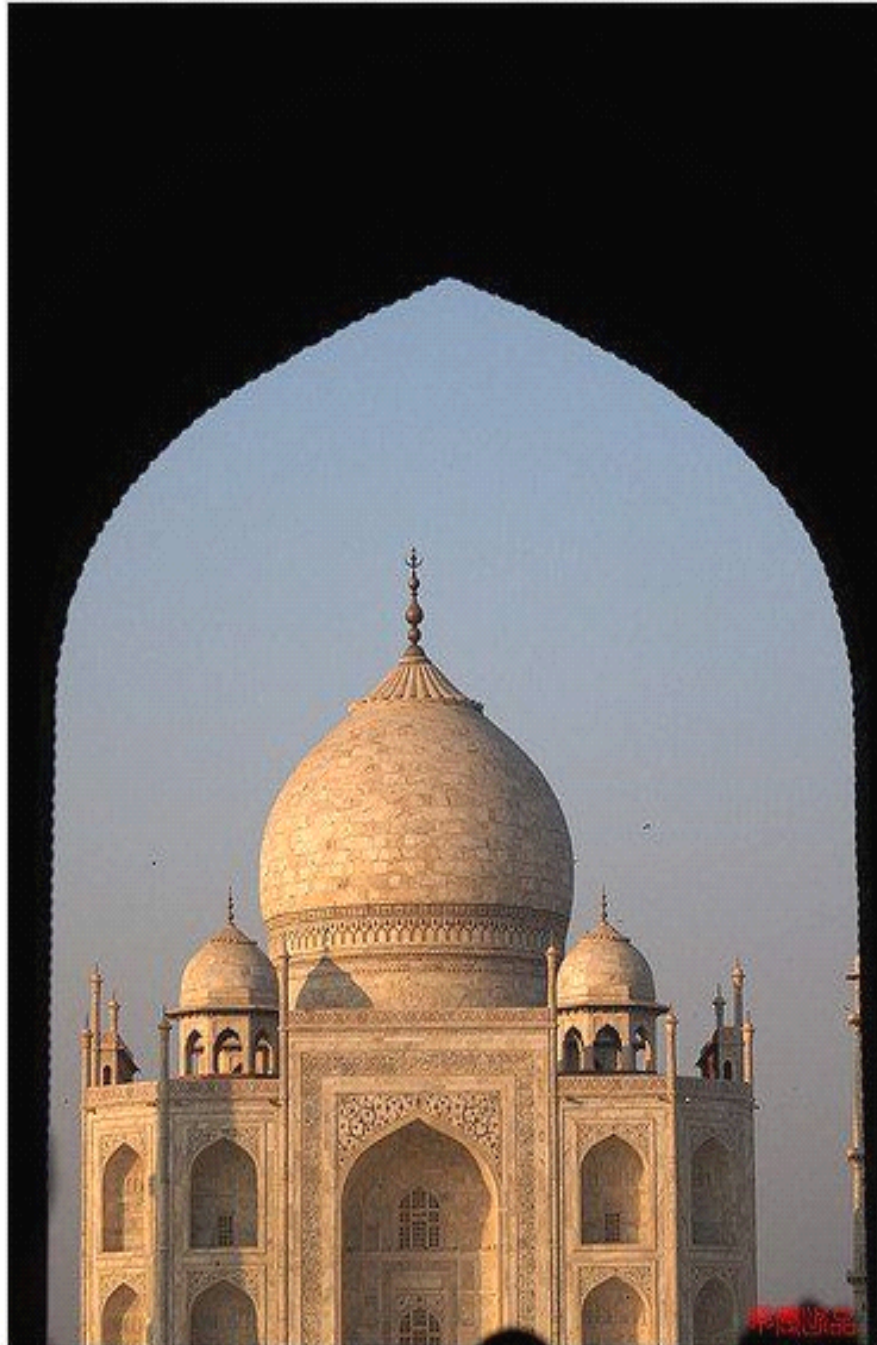




2010-12-5







A: The Taj Mahal was a Mammoth project of Shah jahan's reign .It was a project which required planning till the very last detail .It was something ,which was completed in 22 years .

B: The Taj Mahal itself forms the centerpiece of a 42—acre complex.The cost ?Five million rupies.That's a staggering 104 million dollars in today money.But then perfection comes at a price .And today the Taj Mahal does look as perfect as it did 500 years ago.



2010-12-5











A: Its curving ,gently swelling dome and the square base upon which its rests so lightly is a familiar image from hundreds of brochures and travel books .

B: Meanwhile the unique mughal style combines elements of persian central Asia, and Islamic architecture .Most impressive are the black and white chessboard marble floor ,the four tall minarets(40m high) at the corners of the structure and the majestic dome in the middle .

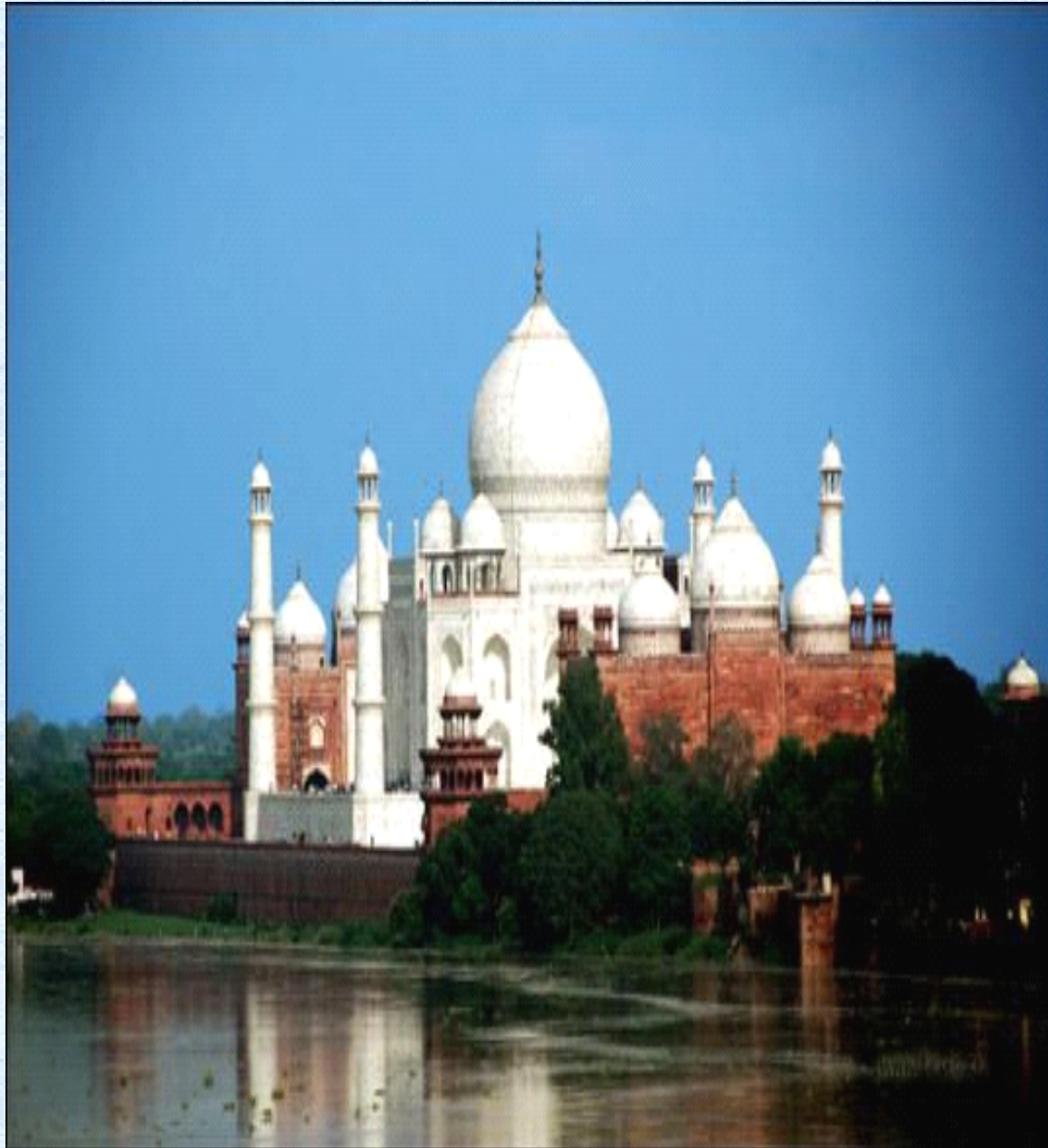




**అశ్వారా**  
అశ్వారా

www.ashwara.com

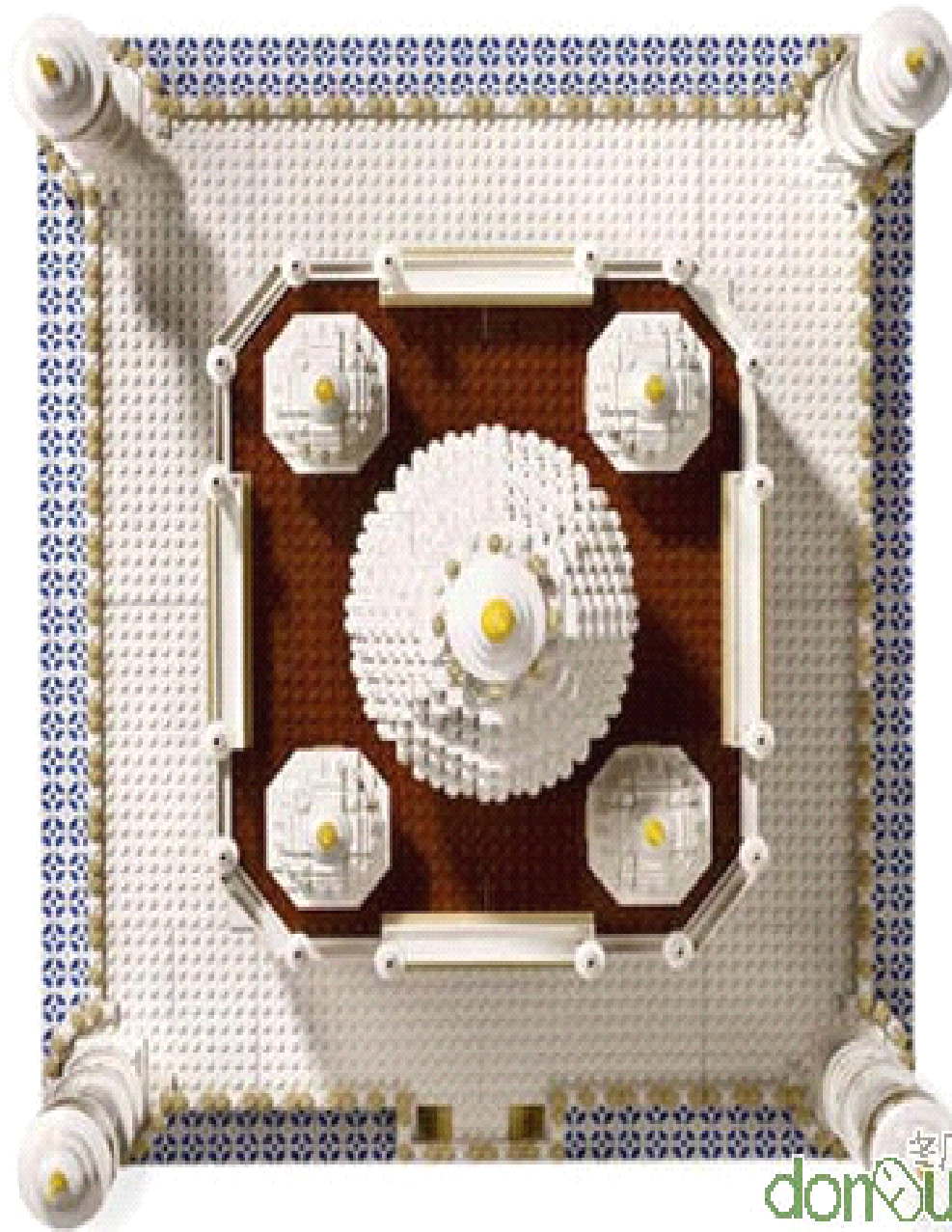




A: Other illusionary effects have been accounted for in the geometry of the tomb and the tall minarets. The impressive artwork includes geometric elements, plants and flowers, mostly common in Islamic architecture.



2010-12-5



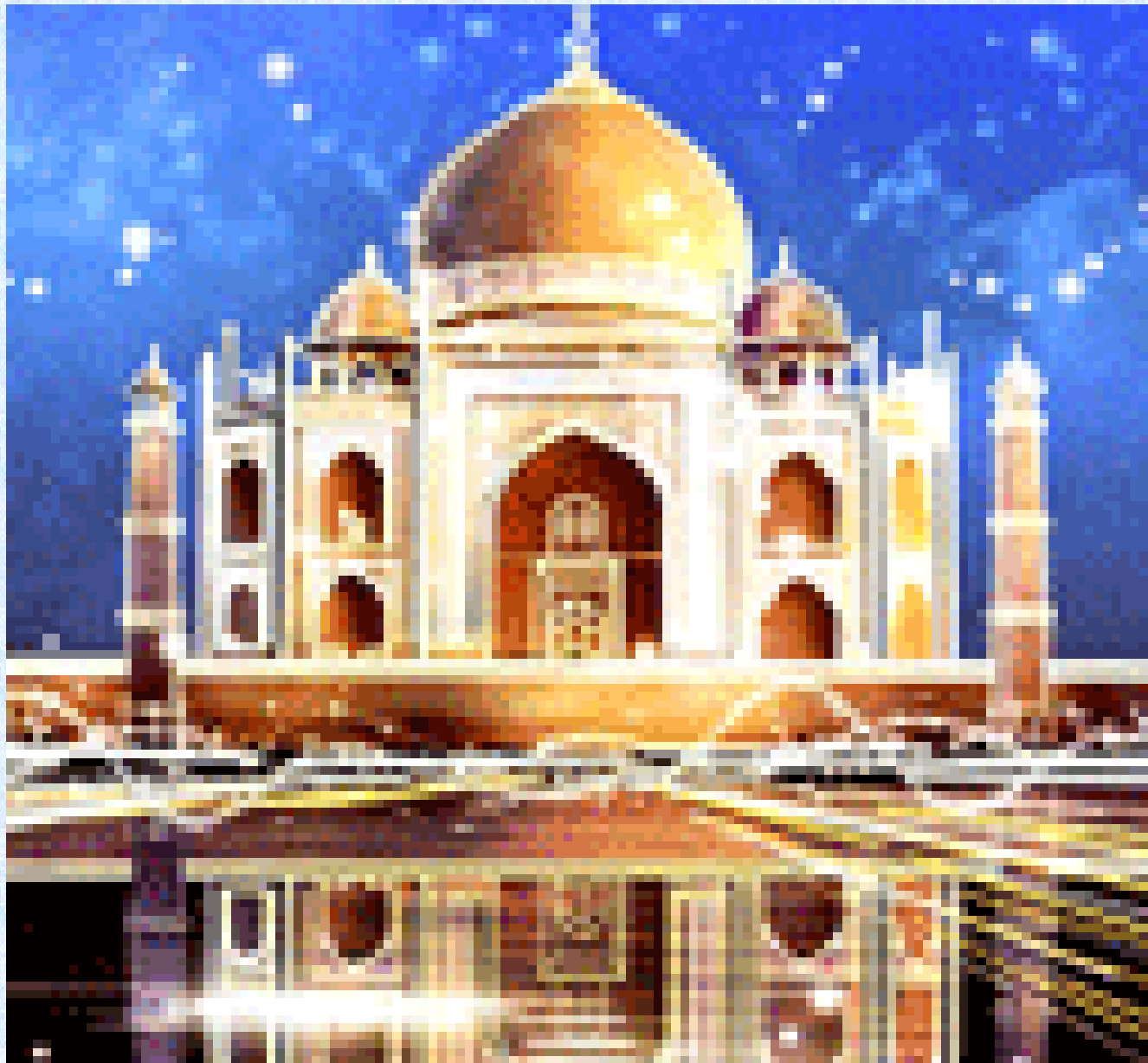
B:That's great ! If you are travelling in india ,seeing it for real and up close is a once in a lifetime experience .

A:Well ,thank you for your attention to our program.see yopu next Friday.





2010-12-5



2010-12-5



2010-12-5





2010-















2010-12-5



The End  
Thank you!